

System requirements and installation instructions

1. System requirements

- 1.1 The unit must be used with products that support USB functions. Please make sure your PC system supports the USB 1.1 or 2.0 specifications.
- 1.2 As Windows operation system supports USB function by default, you can use the unit as normal USB digital speakers without installing drivers as long as using the operation systems listed below. However, if you intend to enjoy the 3D sound effects such as HRTF 3D, EAX, or virtual 5.1 CH, you need install the Xear 3D sound effect driver. Before installing the driver, please make sure the connection between the USB speakers and your PC system has been completed.

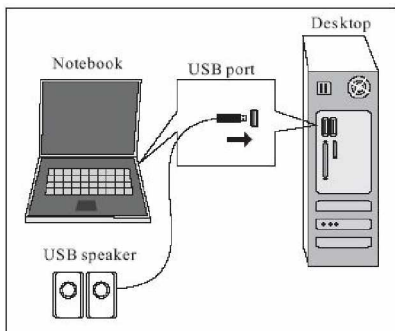
System: Win98SE, WinME, Win2000, WinXP, Mac OS9.0 and 10.1.

Recommended system configurations: Intel PII 350 MHz or AMD K6 450, memory 64MB RAM (Win98SE) or 128MB RAM (WinME, Win2000 or WinXP).

- 1.3 If your PC has more than 1 USB port, please remember which port the speaker is connected to when installing the driver. Your PC system will not be able to initiate the Xear 3D function unless you connect your speaker to the correct USB port.

2. How to install the Xear 3D sound effect driver:

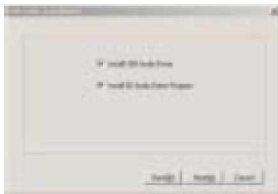
2.1 Boot your PC and connect the USB speaker to your PC.



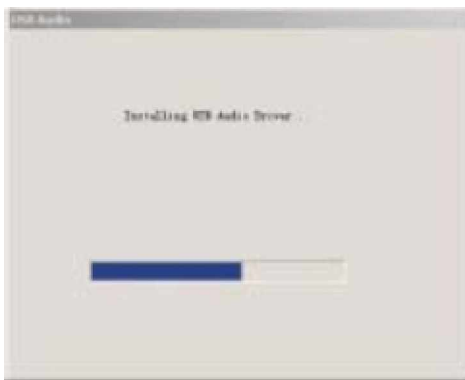
2.2 Follow the on-screen instruction and click Next to continue the installation of driver.



2.3 Choose installing the driver only or installing both the driver and the demo, and click Next to continue.



2.4 If you are using Win XP operation system, the Windows logo dialogue box may appear, please click continue anyway to allow the program to continue the installation.



2.5 Reboot your PC to initiate the driver after the installation is completed.

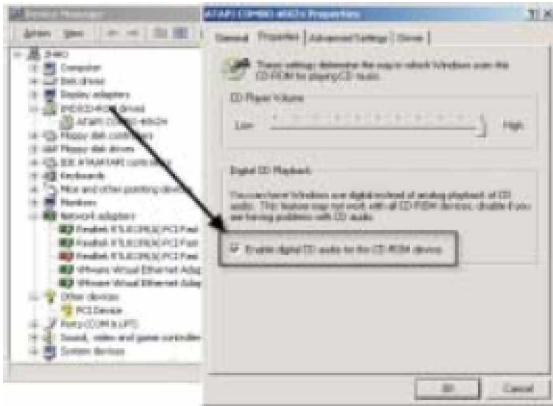


2.6 If you PC has more than one USB port, you can connect the USB speaker to any port you like. The driver will detect the speaker and show an Icon on the right bottom corner of the screen indicating which connecting port is correct.



2.7 As the USB audio use digital signal which is different from the analog signal that is used in the normal CD playing, you need follow the instructions below:

Reboot your PC, open My computer\Control panel\System\ Device manager, select DVD/CD ROM drives, and select Enable digital CD audio (E) for this CD-ROM device .



2.8 To get better audio playback quality, open:
Control panel \ Sound and multimedia \ Audio \ Advanced \
Performance and select the maximum system hardware acceleration. In
addition, select the maximum sampling rate.

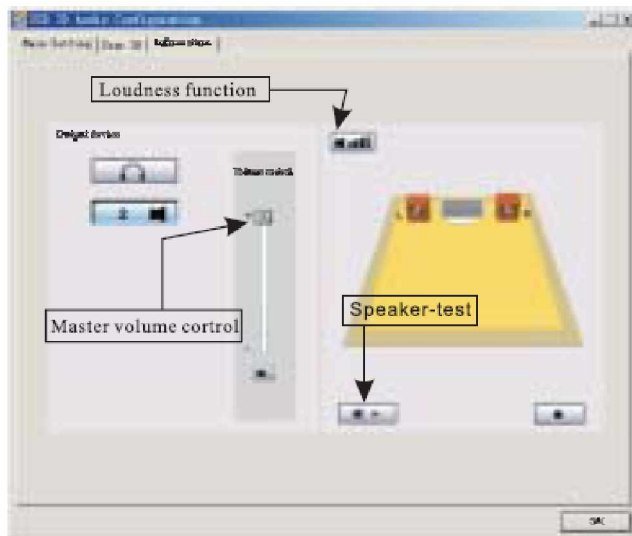


3. Start Xear 3D and its functions:

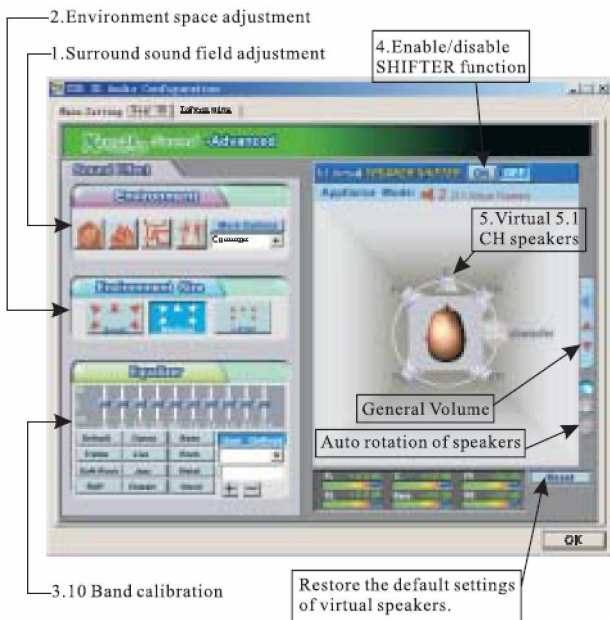
You can find the icon of Xear 3D program in the Control panel and run it
by double clicking on it.

Functions of virtual 5.1 CH speakers

Settings of main screen



Xear 3D Function settings



SPEAKER SHIFTER provides some advanced and entertaining functions by its dynamic adjustable multi channel sound effect system. Whatever

sound output device you are using, you can enjoy the virtual 5.1CH sound effects. In addition, you can adjust the position of the virtual speakers without having to move the real speakers. By doing this, you don't have to bear the unsatisfactory sound output caused by the unbalance speaker position due to space limitation.

Funtcions	Funtion description
1. Environment space adjustment	This function offers 27 types of different environmental sound field.
2. Surround sound field adjustment	You can select 3 different types of listening environment space.
3. 10 Band calibration	You can adjust the frequency curve in any way you like.
4. Enable/disable SHIFTER function	You can enable or disable the SPEAKER SHIFTER function.
5. Virtual 5.1 CH speakers	<p>There are 6 virtual speakers in total, which from a standard 5.1 CH environment. Each virtual speaker corresponds to a real speaker. The biggest advantage of virtual speakers is to enable you to freely adjust the position of speakers without having to move the real speakers, which allows the speakers to give sounds at an ideal position. In addition, you can even adjust the angle of the speakers to change the effect of the whole sound field.</p> <p>When you enlarge the distance between you and a virtual speaker, its volume will decrease accordingly, which you can see from the bottom of the screen (dB). Please note when you change the room size, the head symbol of listener will change its size accordingly to demonstrate its</p>

relation with the space size.

When you disable the SHIFTER, the icon of virtual speakers will become gray, and it will turn to blue when SHIFTER is enabled again.

Instructions on how to use the virtual speaker

Run the audio application program such as DVD, VCD, Games, Mp3 and CD player.

2. Start SHIFTER

Apagado



Encendido



3. Click on the virtual speaker and drag it to the intended position to achieve the effect you like.

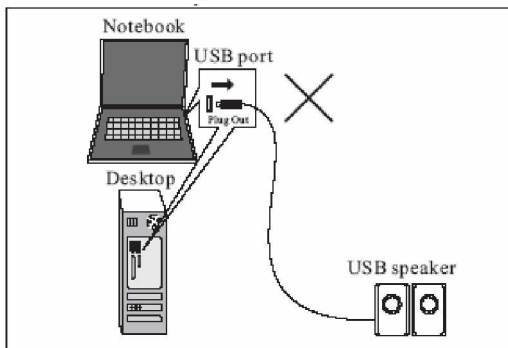
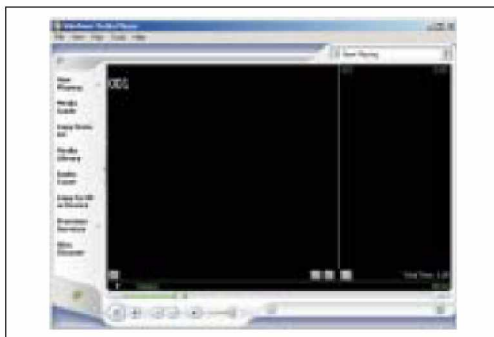


Note: All virtual speakers are adjustable. The center speaker is to output the voice when playing DVD. You can pull it near to the head symbol to increase the voice volume. The subwoofer outputs bass signal that has no

pointing direction. It is recommended to put it on the horizontal level of the head to achieve the optimal effect.

Note:

Please don't unplug the hardware directly when the audio application program is playing a media file. The correct way is to unplug the hardware only after stopping the playing first.



When using audio application program such as PowerDVD or Win DVD,

you need select 6 speakers to play DVD disc. If the application only provides 2 CH output, the 6 CH audio signals will not be able to be processed even when playing the 5.1CH DVD film.

What's in the package

- ü Speakers 2
- ü Instruction manual
- ü Drive disk

Specifications

1. Average power output(R.M.S): 0.5 2
2. Single speaker size 2 Full-range speaker
3. Impedance: 4 Ohms
4. Antimagnetic function: yes
5. Frequency resonance range: 200Hz 20KHz
6. General average power output R.M.S : 1W
7. Package size(H W D) 103 X 103 X 80 mm

Guaranty

If you have any doubt concerning your product's operating mode, we recommend you to look inside the FAQ section or the additional documentation that is in the product's page.

Warranty Authenticity

Soyntec ensure that their product never present imperfection , including design or hability during the product purchase. Soyntec provides 36 month of warranty in all its products, except for the Electrical Power Protections that have 60 month.

UPS guarantee is valid for a period of 36 months from the date of your purchase. (Soyntec guarantees that the battery for the UPS will not fail for a period of 24 months from the date of your purchase).

Valid Warranty.

Please go back to your sales Point showing your receipt or voucher. All requests for assistance are treated with the same courtesy and commitment to customer satisfaction.

Please contact us sending an e-mail to: support@soyntec.com
For UPS you can contact in our Hot line 902 294 294 where will let you know the steps to follow.